



Thinking about university?

A guide for New Zealand students, parents and whānau



2022





Nau mai piki mai tāuti mai

Welcome to 'Thinking about university? A guide for NZ students'.

This guide is to support students and their whānau when thinking about studying at one of New Zealand's eight universities. It is a starting point to help you plan how to successfully move into university life.

Read this guide, along with the latest information on our website:
www.thinkingaboutuni.nz,
and visit each university website for more detailed information.

This guide has been collated by Universities New Zealand on behalf of the eight universities. For more information visit

www.thinkingaboutuni.nz

or contact us at
studentguide@universitiesnz.ac.nz

Information for international students is on our website at

**[universitiesnz.ac.nz/
international-students](http://universitiesnz.ac.nz/international-students)**

Disclaimer – Although every effort has been made to ensure accuracy, it is recommended you check university websites for the latest information.

Universities New Zealand – Te Pōkai Tara is the representative body for New Zealand's eight universities.

May 2021



Section	Page
1 _____ Welcome	2
2 _____ Why a university education?	4
3 _____ Choosing a university	6
4 _____ What to study and where?	8
5 _____ Introducing New Zealand's universities	9
6 _____ Semester dates 2022	26
7 _____ Get ready checklist!	29
8 _____ Get in!	32
9 _____ Get sorted!	37
10 _____ Get more experience!	42
11 _____ Student life: a typical day!	44

Why a university education?

He aha e ako
ai ki te whare
wānanga?

Think of a university education as an investment that gives you options and opportunities for your future.



University is also an opportunity for you to

ENGAGE

Me aro

With leading teachers and researchers from a top 3% world-ranked university

Through internships and work placements with employers and industry



DEVELOP

Me tipu

Specialist knowledge. Critical thinking, research and analytical skills. Communication, interpersonal, and information technology skills.

ENHANCE

Me whakapakari

Cultural understanding, global awareness and community involvement

DISCOVER

Me whakahura

Student life – student groups, clubs, activities

EXPERIENCE & EXPLORE

Me rongō me rapa

Study abroad and international student exchange programmes

CONNECT

Me hono

Choosing a university

Ko tēhea te whare wānanga mōu?

A little planning will help you make the most of the opportunities at university.

All eight New Zealand universities are ranked in the top 3% in the world and offer quality tertiary education and student support – so they're all good options!

Some things you may want to consider:

- What are my interests and strengths? What do I love doing? What are my future goals?
- Which universities offer what I want to study?
- Where is the campus located? Is it in a city, out of town or close to home?
- What is the student population?
- What is the vibe of the university?
- Does the university have all the facilities I'd want?
- Is there university accommodation – Halls of Residence?
- What student support services are available?



A university is a community, offering a range of support services and facilities on campus to enable you to achieve at your best, and to keep you motivated while you're on your study journey. Even if you are considering studying by distance, you still have access to a range of support services.

Facilities & services

- | | | | | | |
|---|----------------------------------|----|------------------------------------|----|-----------------------------------|
| 1 | Chaplaincy | 9 | Disabilities services | 16 | Fees and Finance |
| 2 | Medical Centre | 10 | Book shops | 17 | Scholarships |
| 3 | Sport and Recreation | 11 | Cafes and shops | 18 | Māori Student Academic Support |
| 4 | Marae | 12 | Accommodation / Halls of Residence | 19 | Pasifika Student Academic Support |
| 5 | Careers Centre | 13 | Student Clubs | 20 | Student Wellbeing |
| 6 | Student Union / student advocacy | 14 | Academic and Learning Support | 21 | Library |
| 7 | Child Care | 15 | Admission and Enrolment | 22 | Health Services |
| 8 | Counselling | | | 23 | Student Job Search |



What to study and where?

Ka ako i te aha,
ka ako ki hea?

Universities offer a wide range of subjects to study at undergraduate level. The main undergraduate qualification is called a Bachelor's degree and the subject you choose to specialise in is called your major.

We've put together a list of degrees and the majors offered at each of New Zealand's eight universities to help you decide what to do and where to go.

Check this out on our website:

www.thinkingaboutuni.nz/study-options



Introducing New Zealand universities

Nei ngā whare
wānanga o
te motu

New Zealand's eight universities offer a wide range of study opportunities and all are ranked within the world's top 500 (3%).

Studying at a university develops your professional skills along with important life skills such as analysis, critical thinking, communication and innovation. You will use these through your whole career, not just your first job.





Waipapa Taumata Rau

The University of Auckland

New Zealand's leading university

Main campus: City Campus, Auckland

Other campuses: Newmarket Campus; Epsom Campus; Grafton Campus; Tai Tonga Campus (Manukau); Tai Tokerau Campus (Whāngarei)

The University is ranked as New Zealand's leading university with degrees that are world-class and internationally recognised. Auckland's research-led programmes attract a high level of teaching professionals. You will learn from people who are passionate about their chosen fields.

Faculties

Arts

Business School

Creative Arts and Industries

Education and Social Work

Engineering

Law

Medical and Health Sciences

Science

Auckland Bioengineering Institute

Liggins Institute

Student population

Total (EFTS) **34,240**

Total (Students) **42,880**

Pre-degree **1,110**

Undergraduate **26,000**

Postgraduate **16,745**

Domestic **34,655**

International **8,225**

Māori **3,055**

Pacific **4,100**

Part-time* **10,061**

Full-time* **24,593**

Source: 2020 data. Education Counts, Tertiary Statistics/Participation.
* Domestic students only

0800 61 62 63 | auckland.ac.nz



UniofAkl



University of Auckland



snapuoa



AucklandUni



universityofauckland



UNiofAUCKLAND

Ākonga Māori

Tū ake i te kei o te waka mātauranga. Tū ake nei i Te Whare Wānanga o Tāmaki Makaurau. Nau mai, haere mai

Waipapa Marae (City campus), Tutahi Tonu Marae (Epsom campus) and the Tai Tonga campus in Manukau provide a home away from home for tauira Māori and their whānau.

The Equity Office's Kaitakawaenga Māori provides information and support to tauira and their whānau including advice on entry, enrolment, scholarships and financial opportunities, as well as pastoral guidance.

Tuākana is the university-wide learning community for enhancing the success of tauira Māori, offering study wānanga, whakawhanaungatanga and workshops.

Ngā Tauira Māori is the Māori student association located at the University of Auckland. They are responsible for advocating better conditions for tauira Māori on campus.

WEBSITE KEY WORD SEARCH: Māori, Tuākana

www.auckland.ac.nz/en/education/study-with-us/maori-at-the-faculty/maori-student-support-services.html



Pacific students

Talofa lava, Malo e lelei, Kia orana, Bula vinaka, Fakatalofa atu, Fakaalofa lahi atu, Halo oloketa, Ia orana, Mauri, Aloha, Malo ni, Hafa adai.

Our Fale Pasifika is the centre of the university Pacific community, and our Tai Tonga campus in Manukau allows our Pacific students to attend New Zealand's leading university in the heart of the South Auckland community.

The Equity Office's Pacific Equity Adviser provides a range of student support services including guidance with entry, enrolment and scholarship opportunities.

Tuākana is the university-wide learning community for enhancing the success of Pacific students, offering fonotaga and workshops.

WEBSITE KEY WORD SEARCH: Pacific, Tuākana

www.auckland.ac.nz/en/education/study-with-us/pacific-at-the-faculty/pacific-student-support-services.html





Te Wānanga Aronui o Tāmaki Makau Rau

Auckland University of Technology

One of the world's best modern universities

Main campus: Auckland

Other campuses: North Shore; Manukau

AUT's mission is to create great graduates, offering contemporary university education and world-class facilities while encouraging collaboration across disciplines in our teaching, learning and research.

New Zealand's second largest university, AUT is ranked among the top 1% (251-300) of universities in the world and in the top 40 young universities globally.

The university's focus on technological transformation, external impact and industry connections make AUT graduates highly sought-after and prepare them to be successful wherever in the world their career may take them.

Faculties

Business, Economics and Law | Te Ara Pakihi, Te Ōhanga Me Te Ture

Culture and Society | Te Ara Kete Aronui

Design and Creative Technologies | Te Ara Auaha

Health and Environmental Sciences | Te Ara Hauora A Pūtaiao

Māori and Indigenous Development | Te Ara Poutama

0800 288 864 | aut.ac.nz

Student population

Total (EFTS) **20,185**

Total (Students) **27,320**

Pre-degree (EFTS) **1,505**

Undergraduate (EFTS) **19,565**

Postgraduate (EFTS) **6,780**

Domestic **22,415**

International **4,905**

Māori **2,575**

Pasifika **4,235**

Part-time **6,856**

Full-time **15,559**

Source: 2020 data. Education Counts,
Tertiary Statistics/Participation.
* Domestic students only.



autuni



AUT



AUTUniversity



autuni



autuni

Ākonga Māori

E te hunga pikoko ki te mātauranga, nau mai piki mai ki te Wānanga Aronui o Tāmaki-makau-rau

Ngā Wai o Horotiu marae is located at the city campus. It serves as a whānau, cultural and spiritual centre.

Programmes and activities across the university are dedicated to taura Māori achievement and success.

Takawaenga Māori - Māori Liaison Services can help with advice (academic, cultural or personal), financial (scholarships and administration), advocacy (faculty and community), and mentors.

Titahi Ki Tua (TKT) offers Māori AUT students a place where they can come together to share ideas, share identity, draw support, socialise, meet other taura Māori and practice culture – kapa haka, all in a marae environment.

WEBSITE KEY WORD SEARCH: Māori, Māori Student Support

www.aut.ac.nz/student-life/student-support/maori-student-support



Pacific students

Warm Pacific greetings!

AUT offers comprehensive support for our diverse Pacific communities.

Our Student Hub is always a good place to start if you are looking for support and advice with your studies, health, welfare and anything else on living and studying in New Zealand.

Our Office of Pacific Advancement oversees a range of Pacific-focused student engagement activities. Through our Oceanian Leadership Network you can access initiatives that focus on leadership development, academic, cultural and social support.

WEBSITE KEY WORD SEARCH: Pacific, Pacific Support

www.aut.ac.nz/student-life/student-support/pacific-student-support





THE UNIVERSITY OF
WAIKATO
Te Whare Wānanga o Waikato

Te Whare Wānanga o Waikato

The University of Waikato

Ko Te Tangata, For the People

Main campus: Hamilton

Other campuses: Tauranga; Zhejiang University City College (ZUCC), China

University of Waikato graduates are known for making a big difference in the world around them and we look forward to helping you do the same. Our flexible degree structures mean you can study a broad range of subjects to shape a qualification that matches your strengths and career interests.

With smaller class sizes, you'll get greater support from your lecturers. Our workshops and tutorials give you the chance to collaborate closely with your classmates, building lasting friendships and your professional network for the future. You'll gain hands-on experience through our work-integrated learning programme, giving you a competitive edge with potential future employers and helping you stand out from the crowd as you start your career.

Hamilton campus

Our Hamilton campus is situated on 65 hectares of stunning grounds complete with cafes, lakes, vibrant Boon Street artworks, and on-campus accommodation.

Tauranga campus

Our award-winning Tauranga campus, just two years old, offers a modern learning environment that's a stone's throw from the beautiful Tauranga waterfront and downtown shopping precinct. Students can move easily between campuses with our free, wifi-enabled Kaimai shuttle, which runs throughout the day during the trimesters.

That's just the beginning - we're proud to be a big part of the thriving cities of Hamilton and Tauranga, where you'll enjoy the exciting events and laidback lifestyle these cities offer, and some of the country's best beaches, lakes, mountains and natural reserves on your doorstep.

Divisions

- Arts, Law, Psychology and Social Sciences
- Education
- Health, Engineering, Computing and Science
- Management
- Māori and Indigenous Studies

Student population

Total (EFTS)	10,515
Total (Students)	13,655
Pre-degree	1,120
Undergraduate	9,015
Postgraduate	4,035
Domestic	10,480
International	3,180
Māori	2,570
Pasifika	940
Part-time*	3,145
Full-time*	7,337

Source: 2020 data. Education Counts, Tertiary Statistics/Participation.

* Domestic students only.

0800 924 528 | waikato.ac.nz



Ākonga Māori

Māori students make up nearly a quarter of our student population, and in welcoming you to join our University whānau, we want you to know we are committed to helping you succeed. We have lots of initiatives to support our taura Māori, including Te Kāhui Pīrere transition-to-university programme, Te Āhurutanga leadership programme, Māori mentors, scholarships and awards, and even a free bus from our surrounding regions.

Both Waikato campuses offer the only full immersion te reo Māori diploma at a University, Te Tohu Paetahi, which has helped revitalise te reo Māori for 30 years. Our Māori academic staff are internationally recognised leaders in indigenous knowledge, so you'll be learning from the best.

Our Māori student groups are active across campus, leading events which bring new and returning students together, connecting you into the whānau. From the moment you arrive on campus and attend the pōwhiri, through to your official graduation on our University marae, this is a place where you can feel at home.

Nau mai, haere mai ki Te Whare Wānanga o Waikato.

WEBSITE KEY WORD SEARCH: Māori, Māori Student Support

www.waikato.ac.nz/maori/

Pacific students

Kia orāna, mālō e lelei, tālofa lava, fakaalofa lahi atu, ni sa bula vinaka, taloha ni, halo olaketa, ko na mauri, tālofa, aloha and warm Pacific greetings.

We have a great team of dedicated Pacific support staff and resources in place to help you achieve your aspirations. This includes our Imua initiative which supports Pacific students in the transition to university, and scholarships like our Tertiary Achievement in Pacific Ako Awards.

We have many Pacific student associations you can join, and the 'Conch' on the Hamilton campus is a space for you to enjoy Fono, seminars and workshops, social gatherings, and community events.

WEBSITE KEY WORD SEARCH: Pacific, Pacific Support

www.waikato.ac.nz/students/pacific-support/





UNIVERSITY OF NEW ZEALAND

Te Kunenga ki Pūrehuroa Massey University

New Zealand's Defining University

Main campus: Manawatū (Palmerston North)

Other campuses: Auckland and Wellington

The University has award-winning teachers, well-connected lecturers and world-renowned researchers. Add this to our committed support staff and you have the best learning environment to help you move towards your future.

Colleges

Creative Arts

Health

Humanities and Social Sciences

Sciences

Massey Business School

Student population

Total (EFTS)	18,565
--------------	--------

Total (Students)	30,500
------------------	--------

Pre-degree	2,395
------------	-------

Undergraduate	19,795
---------------	--------

Postgraduate	8,930
--------------	-------

Domestic	25,485
----------	--------

International	5,015
---------------	-------

Māori	3,645
-------	-------

Pasifika	1,665
----------	-------

Part-time*	14,257
------------	--------

Full-time*	11,229
------------	--------

Source: 2020 data. Education Counts,
Tertiary Statistics/Participation.

* Domestic students only.

0800 627 739 | massey.ac.nz



Ākonga Māori

Piki mai, kake mai, nau mai, haere mai ki Te Kunenga Ki Pūrehuroa

Massey University's Tiriti-led strategy has sparked a new focus on supporting taurua Māori achievement. This includes Te Rau Tauawhi, the Māori Student Centre, with a team dedicated to helping taurua navigate University life and succeed.

Te Pūtahi-a-Toi, the School of Māori Knowledge is the cultural heart of the Manawātū campus, while the Pukeahu Marae development project will provide an exciting cultural and learning space at the Wellington campus.

Taurua Māori are also supported by Māori Student Associations on each campus and Māori student recruitment advisors are available to help with enrolment and career advice.

Te Rau Puawai Workforce Programme provides bursaries and incredibly successful learning support for students in the field of Māori mental health.

The Pūhoro Māori STEM Academy is located at both the Manawātū and Auckland campuses. The programme is designed to guide secondary school students through NCEA, and prepare them for tertiary study across the fields of science, technology, engineering and mathematics.

To find out what Massey – Te Kunenga Ki Pūrehuroa - has to offer Māori students visit www.massey.ac.nz/maori

WEBSITE KEY WORD SEARCH: Māori, Māori student advisors, Pūhoro

www.massey.ac.nz/maori



Pacific students

Kia orana, Ni sa bula Vinaka, Fakaalofa lahi atu, Talofa lava, Mālō ni, Malo e lelei, Fakatalofa atu.

Massey University has a range of support services available for Pasifika students and a Pasifika Directorate dedicated to growing the participation and success of Pasifika students at all levels of study.

Pasifika advisors based on each campus can help with academic and study advice along with pastoral care.

Each campus has a fale space for Pasifika students to study and gather, and Pasifika Student Associations provide cultural connection and fellowship.

Pasifika recruitment advisors are also available to offer course and enrolment advice.

WEBSITE KEY WORD SEARCH: Pasifika Students

www.massey.ac.nz/massey/students/pasifika-student-services





Te Herenga Waka Victoria University of Wellington

Capital thinking, globally minded

Campus: Wellington

Te Herenga Waka—Victoria University of Wellington draws on its capital city location to carry out world-class research and teaching, and to make connections here and around the world.

In partnership with Wellington city and region, we provide an unrivalled student experience. Our students feel a sense of belonging to a vibrant and inclusive university and civic community.

This is a place where learning flourishes and people are equipped to transform society. We grow the capability, skills, and confidence of all our students and support them to pursue their passion and excel in their chosen area of study.

Faculties

- Architecture and Design Innovation
- Education
- Engineering
- Graduate Research
- Health
- Humanities and Social Sciences
- Law
- Science
- Wellington School of Business and Government

Student population

Total (EFTS)	17,845
Total (Students)	22,410
Pre-degree	480
Undergraduate	16,195
Postgraduate	6,070
Domestic	19,350
International	3,065
Māori	2,315
Pasifika	1,380
Part-time*	5,609
Full-time*	13,739

Source: 2020 data. Education Counts, Tertiary Statistics/Participation.
* Domestic students only.

0800 VICTORIA (0800 842 867) | victoria.ac.nz

E ngā taura Māori

Te Herenga Waka—Victoria University of Wellington is a global—civic university with our marae at our heart.

The university draws its Māori name from our marae complex, which is located on our Kelburn campus. Te Herenga Waka was the first marae to be opened at a University and is the site for many lectures, tutorials, seminars and other hui to support our communities. We are excited with the proposed redevelopment of the wider marae complex to build a Living Pā building adjacent to our whareniui.

The university has a wide range of services to support Māori students—this begins when you are considering studying in Wellington. The Māori Liaison Officers can assist you and your whānau with entrance and admission information and course planning. An orientation programme specifically for new taura Māori will also help ease your transition into university study.

Āwhina, the Māori student support team, works across all campuses and has staff who can help you with one-on-one advising, study tutorials and wānanga. They also organise workshops on topics such as applying for scholarships, career development, and connecting with industry. The Māori Learning Advisor at Student Learning offers one-on-one sessions and workshops to help you develop your writing, study, and assignment skills.

Ngāi Tauira, the Māori students' association, represents the interests of all taura Māori at the University. They also run a range of social and cultural events, as do other subject-based student associations including Ngā Rangahautira (the Māori Law students' association), Ngā Taura Ūmanga (the Māori Commerce students' association), and Te Hōhaietī o te Reo Māori ki Wīkītōria (the Māori Language Society).

WEBSITE KEY WORD SEARCH: Māori, Āwhina, marae.

www.victoria.ac.nz/maori-at-victoria

Pacific students

Talofa lava, Kia orana, Mālō e lelei, Ni sa bula vinaka, Fakaalofa lahi atu, Fakatalofa atu, Kam na mauri, Gud de tru, Kaselehlle, Halo olgeta, la orana, Aloha mai e, Noa'ia, Kia ora, warm Pasifika greetings.

Te Herenga Waka—Victoria University of Wellington has a university-wide commitment to Pasifika student achievement through excellent quality, relevant teaching and learning experiences, and raising Pasifika participation and academic success.

The university provides a wide range of Pasifika student support services that foster learning and teaching communities in an environment that is welcoming and safe, and focused on academic excellence, personal growth, and wellbeing, with Pasifika culture at the core.

The Pasifika Liaison Officer can assist you and your family with entrance and admission information, course planning, and any questions about study. The Pasifika Student Success team works across all faculties with Pasifika engagement advisers providing holistic support, course-specific study sessions, exam-preparation, learning and development workshops for 100-level to 300-level courses.

A Pasifika learning adviser, Pasifika library navigator and student liaison, an Equity Scholarships Programme Manager and 10 Pasifika cultural and academic student associations under the umbrella of the Pasifika Students' Council are also available to ensure a successful university experience for all students.

WEBSITE KEY WORD SEARCH: Pasifika

www.victoria.ac.nz/pasifika





Te Whare Wānanga o Waitaha

University of Canterbury

Be prepared to change the world.
Tangata Tū, Tangata Ora

Main campus: Ōtautahi Christchurch

One of the top universities in New Zealand, Te Whare Wānanga o Waitaha | the University of Canterbury has gained an international reputation for academic excellence in teaching and research. The University's undergraduate and postgraduate programmes are recognised worldwide.

Colleges

Arts | Te Rāngai Toi Tangata

Business and Law | Te Rāngai Umanga me te Ture

Engineering | Te Rāngai Pūkaha

Education, Health and Human Development | Te Rāngai Ako me te Hauora

Science | Te Rāngai Pūtaiao

Student population

Total (EFTS)	15,385
Total (Students)	18,330
Pre-degree	585
Undergraduate	10,720
Postgraduate	7,485
Domestic	15,575
International	2,755
Māori	1,590
Pasifika	520
Part-time*	3,321
Full-time*	12,255

Source: 2020 data. Education Counts,
Tertiary Statistics/Participation.
* Domestic students only

0800 827 748 | canterbury.ac.nz



Ākonga Māori

Nau mai, haere mai ki te Whare Wānanga o Waitaha

UC Māori offers support, advice and guidance for all ākonga Māori studying at Te Whare Wānanga o Waitaha | University of Canterbury (UC).

Led by the whānau at Te Waka Pākākāno | Office of the Assistant Vice-Chancellor Māori, Pacific and Equity, our initiatives focus on supporting ākonga Māori to succeed academically, while encouraging personal growth and connection to Māori community and culture.

Manaakitanga is important to us. Whether you are thinking about university study or enrolling for the first time, UC Māori can provide you with guidance and support to ensure the study pathway you choose, is right for you. We will continue to support you through to the completion of your chosen degree and also offer a range of services and initiatives designed to help you succeed.

- Academic support and guidance
- Manaaki atu, manaaki mai—pastoral care, support and guidance
- Tōia Mai—a noho marae experience for first year ākonga Māori
- Eke Panuku—our UC Māori Orientation event
- Paihere—our UC Māori Tuākana-Tāina mentoring and leadership programme
- Eke Tangaroa—our UC Māori Celebration for Māori graduands and graduates
- Te Whare Ākonga o Te Akatoki Māori—the UC Māori Students' Study Centre

Te Akatoki Māori Students' Association (TA) also offer many social activities including whānau days, Pō whakangahau, kapa haka and more.

WEBSITE KEY WORD SEARCH: Māori, Tuākana Tāina, Punenga
www.canterbury.ac.nz/support/akonga-maori/

Pacific students

Talofa lava, Malo e lelei, Kia orana, Ni sa bula vinaka, Halo olaketa, Namaste, Kam na mauri, Fakaalofa lahi atu, la orana, Mahalo, Malo ni, Kia ora and warm Pasifika greetings.

Pasifika support services have been designed to ensure that Pasifika students get the most out of their studies.

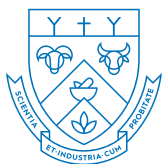
The Pacific Development Team offers pastoral care and support to Pasifika students and provides one-to-one peer support to Pasifika students in their first year of study through a mentoring programme. Additional support is offered through the PASS (Pacific Academic Solutions and Success) programmes.

There are dedicated Pasifika spaces onsite such as the Pasifika Student Fale (House) which provides a space for small Pasifika student gatherings and tutorials, and our Pasifika common room.

Pasifika Events such as Get Fresh, PASS Learning Skills, Pasifika Welcome Day, Jandals and Pasifika Graduation celebrations all help our students connect and build a healthy sense of belonging as a valued part of the wider University community.

WEBSITE KEY WORD SEARCH: Pacific
www.canterbury.ac.nz/support/get-support/pasifika/





LINCOLN
UNIVERSITY
TE WHARE WĀNAKA O AORAKI

Te Whare Wānaka o Aoraki Lincoln University

A place to grow.

Main campus: Lincoln

At Lincoln University, helping our students grow is what we are all about. And we encourage them to do it their way, with diverse learning that fits their ambitions in an environment that allows them to flourish. We have a 138-year history of land-based teaching and that's where our future lies.

Our areas of specialisation reflect this: Agriculture, Horticulture and Viticulture, Business, Science, Environment, Landscape architecture, Tourism, Sport and Recreation, Property and Valuation, and Food, Wine & Beer.

Lincoln University offers a diverse learning experience across a range of diplomas, certificates and degrees, which have never been more relevant than they are today.

Faculties & Divisions

Agribusiness and Commerce

Agriculture and Life Sciences

Environment, Society and Design

University Studies and English Language Division

Student population

Total (EFTS)	2,440
Total (Students)	3,170
Pre-degree	380
Undergraduate	1,690
Postgraduate	1,200
Domestic	1,945
International	1,225
Māori	165
Pacific	50
Part-time*	408
Full-time*	1,539

Source: 2020 data. Education Counts, Tertiary Statistics/Participation.
* Domestic students only

0800 10 60 10 | lincoln.ac.nz



Ākonga Māori

Nau mai ki te Whare Wānaka o Aotearoa.

Lincoln University is dedicated to developing the next generation of Māori leaders by offering industry-relevant, career-orientated programmes ranging from diplomas all the way to undergraduate and postgraduate degrees.

Te Awhioraki is an association that represents all Māori students on campus and is managed and run by Māori students.

WEBSITE KEY WORD SEARCH: Māori Students

www.lincoln.ac.nz/Future-Students/Maori-Students/

Pacific students

Kia Orana, Talofa Lava, Kia Ora, Malo e lelei, Nisa Bula Vinaka, Fakaalofa Lahi Atu, Taloha ni, Fakatalofa atu, Halo oloketa.

Lincoln University has a longstanding association with the Pacific region and its communities and aims to contribute to the educational and economic aspirations of Pacific people both within New Zealand and in the wider Pacific region.

A range of support services, both academic and pastoral, are located on campus.

WEBSITE KEY WORD SEARCH: Pasifika

www.lincoln.ac.nz/Lincoln-Home/Future-Students/Pasifika-Students/





Te Whare Wānanga o Ōtākou

University of Otago

**‘Only Otago’ for Academic Excellence
and Outstanding Experience.**

Main campus: Dunedin

Otago’s specific research strengths are in the medical, biomedical, biological and natural sciences, the liberal arts, and law. Otago’s outstanding academic reputation, strong research culture, and vibrant campus lifestyle attract highly-talented students from all over New Zealand and overseas.

Faculties

Health Sciences

Humanities

Sciences

Otago Business School

Student population

Total (EFTS)	18,690
Total (Students)	20,865
Pre-degree	315
Undergraduate	15,860
Postgraduate	4,975
Domestic	18,350
International	2,515
Māori	2,305
Pasifika	1,160
Part-time*	3,210
Full-time*	15,140

Source: 2020 data. Education Counts,
Tertiary Statistics/Participation.
* Domestic students only

0800 80 80 98 | otago.ac.nz

Ākonga Māori

Nau mai, haere mai, ki Te Whare Wānanga o Ōtāgo

Otago tauira Māori and their whānau have access to a wide range of support services, as well as scholarships and a dedicated School of Māori, Pacific and Indigenous Studies: Te Tumu.

The Māori centre – Te Huka Mātauraka offers a home away from home for tauira Māori, from pre-enrolment, Turāka Hou – Māori Orientation – through to pre-graduation celebrations, graduation and beyond.

Te Rōpū Māori o Te Whare Wānanga o Otago is the Māori Students' Association.

WEBSITE KEY WORD SEARCH: Māori, Māori Centre

<https://www.otago.ac.nz/maoricentre/index.html>

Pacific students

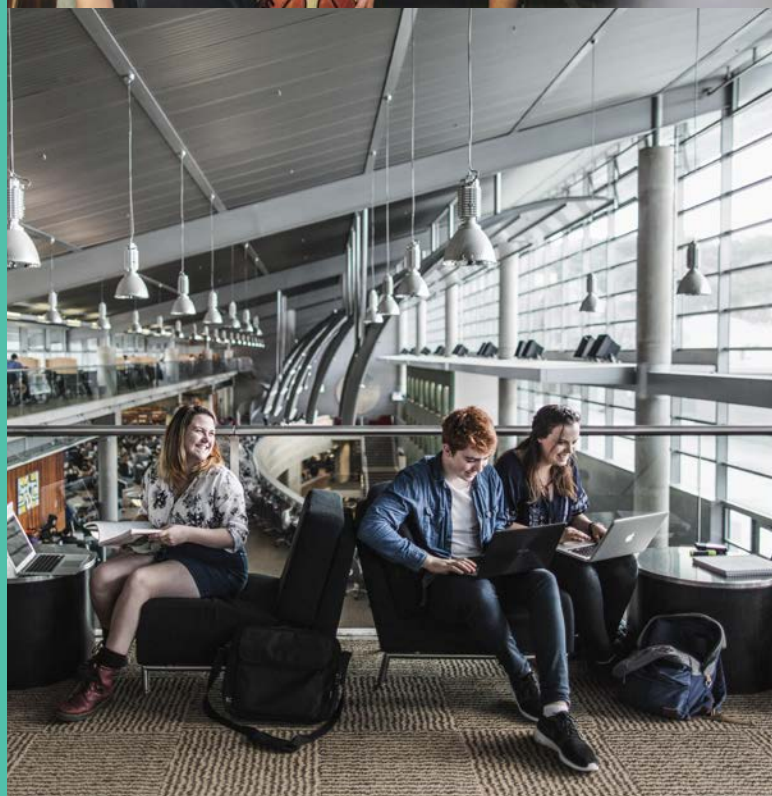
Kia Orana, Talofa Lava, Kia Ora, Malo e lelei, Nisa Bula Vinaka, Fakaalofa Lahi Atu, Taloha ni, Fakatalofa atu, Halo oloketa, Mauri, Fakatalofa atu.

The Pacific Island Centre, Te Pokapū mā kā ākoka o kā Mouutere o Te Moana Nui a Kiwa supports Pacific students, their families and communities at Otago University.

The centre offers Academic Mentoring through the Taimane programme, and can offer tutorial sessions. Supervised study nights are also held.

WEBSITE KEY WORD SEARCH: Pacific, Pacific Students

www.otago.ac.nz/pacific-at-otago/index.html

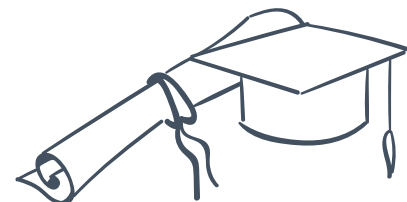


Semester

Week Starting	The University of Auckland	Auckland University of Technology	The University of Waikato	Massey University	Victoria University of Wellington	The University of Canterbury	Lincoln University	The University of Otago
1 3.01.22	Summer school	Summer school from 5 Jan	Summer school from 5 Jan	Summer school from 5 Jan		Summer school from 3 Jan		
2 10.01.22					Summer school		Summer school from 10 Jan	Summer school from 10 Jan
3 17.01.22					Trimester 3 continues			
4 24.01.22								
5 31.01.22								
6 7.02.22								
7 14.02.22	Examinations 14-16 Feb		Examinations 16-18 Feb	Examinations 16-18 Feb				Examinations
8 21.02.22					Enrolment completion	Semester One begins	Semester One begins	19-24 Feb
9 28.02.22	Semester One begins	Semester One begins	Enrolment completion	Semester One begins	Trimester One begins			Semester One begins
10 7.03.22			Trimester A begins					
11 14.03.22								
12 21.03.22								
13 28.03.22								
14 4.04.22				Mid-Semester				
15 11.04.22	Mid-Semester Break (Easter)	Mid-Semester Break (Easter)		Break (Easter) 8-22 April	Mid-Trimester Break (Easter)	Mid-Semester Break (Easter)	Mid-Semester Break (Easter)	Mid-Semester
16 18.04.22	15-29 April	15-29 April	Mid-Trimester Break (Easter)		13-25 April	11-29 April	11-29 April	Break (Easter) 15-25 April
17 25.04.22			18-29 April					
18 2.05.22								
19 9.05.22								
20 16.05.22								
21 23.05.22								
22 30.05.22								
23 6.06.22	Study Break 7-8 June	Study Break 7-10 June		Study Break 7-10 June	Study Break 6-9 June	Study Break 7-10 June	Study Break 7-10 June	Examinations 8-22 June
24 13.06.22	Examinations 9-27 June	Examinations 13-24 June	Study Break 13-17 June	Examinations	Examinations	Examinations	Examinations	
25 20.06.22			Examinations	13-25 June	13-25 June	13-25 June	13-24 June	
26 27.06.22	Inter Semester Break	Mid-Year Break	20-31 June	Mid-Year Break	Mid-Year Break	Mid-Year Break	Mid-Year Break	Mid-Year Break 23 June-10 July

Dates 2022

Week Starting	The University of Auckland	Auckland University of Technology	The University of Waikato	Massey University	Victoria University of Wellington	The University of Canterbury	Lincoln University	The University of Otago
27 4.07.22	28 June - 15 July	27 June-15 July	Mid-Year Break	27 June-15 July	27 June-8 July	27 June-15 July	27 June-15 July	
28 11.07.22			5 - 15 July		Trimester Two begins			Semester Two begins
29 18.07.22	Semester Two begins	Semester Two begins	Trimester B begins	Semester Two begins		Semester Two begins	Semester Two begins	
30 25.07.22								
31 1.08.22								
32 8.08.22								
33 15.08.22								
34 22.08.22					Mid-Trimester break			Mid-Semester break
35 29.08.22	Mid-Semester break		Mid-Trimester break	Mid-Semester break	22 Aug-2 Sept	Mid-Semester break	Mid-Semester break	27 Aug - 4 Sept
36 5.09.22	29 Aug-9 Sept	Mid-Semester break	29 Aug-9 Sept	29 Aug-9 Sept		29 Aug-9 Sept	29 Aug-9 Sept	
37 12.09.22		5 - 16 Sept						
38 19.09.22								
39 26.09.22								
40 3.10.22								
41 10.10.22						Study break		
42 17.10.22					Study break 17-20 Oct	14-28 Oct		Examinations 19 Oct-12 Nov
43 24.10.22	Study break 25-26 Oct	Study break 25-28 Oct	Study break 25-28 Oct	Study break 25-28 Oct	Examinations 25 Oct-12 Nov		Study break 25-28 Oct	
44 31.10.22	Examinations 27 Oct-14 Nov	Examinations 31 Oct-11 Nov	Examinations 31 Oct-11 Nov	Examinations 31 Oct-16 Nov		Examinations 31 Oct-10 Nov	Examinations 31 Oct-11 Nov	
45 7.11.22								
46 14.11.22			Trimester C begins		Trimester 3 begins		Summer School begins	
47 21.11.22				Summer School begins		Summer School begins		
48 28.11.22	Late year term	Summer School begins						
49 5.12.22								
50 12.12.22								
51 19.12.22							Examinations 14-15 Dec	
52 26.12.22								



Qualifications

Ngā Tohu

University preparation programmes (NZQF Levels 4/5)

All universities have Foundation pathways for students who need further English language, academic and study skills preparation prior to undertaking undergraduate study. Foundation programmes generally run for up to one year of full-time study.

Bachelor's degree (NZQF level 7)

Is normally three years in duration (full-time) and consists of a prescribed number of papers or courses. Typically, a Bachelor's degree offers a great deal of flexibility, and the opportunity for students to choose a programme that is appropriate for them.

Bachelor's degree with honours (NZQF level 8)

Is a one-year programme of study following a Bachelor's degree or an integrated four-year programme, requiring more specialised study in the chosen major subject and frequently involving some independent research or investigation.

Graduate diploma / Graduate certificate (NZQF level 7)

Is a one-year (full-time) course of study for graduates. Prior learning or experience in the subject matter of the diploma is not always required, giving graduates an opportunity to add a qualification in a different major subject to that of their first degree. A Graduate diploma may also be used as a bridging qualification to specialist postgraduate study.

A Graduate certificate is a half-year (full-time) course of study.

Postgraduate diploma / Postgraduate certificate (NZQF level 8)

A Postgraduate diploma is a one-year (full-time) course of study that builds on the same subject matter in the academic field of a relevant Bachelor's degree.

A Postgraduate certificate is a half-year (full-time) course of study.

Masters' degree (NZQF Level 9)

Is open to those who have completed a Bachelor's degree with good grades, and comprises 1–2 years of advanced study in the student's major discipline.

NZQF LEVEL

QUALIFICATION TYPE

1-4	Certificates
5-6	Diplomas
7	Bachelor's degrees Graduate diplomas and certificates
8	Postgraduate diplomas and certificates Bachelor's degrees with honours
9	Master's degrees
10	Doctorates

Doctorate (NZQF level 10)

A doctorate is normally the highest academic qualification available within a university. The main doctorate is the PhD (Doctor of Philosophy). This degree can be taken in any one of the wide range of subjects and involves original and sustained research under academic supervision. A PhD usually takes at least three years of full-time study.

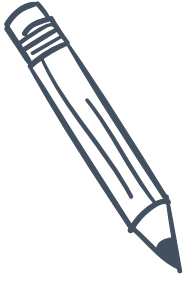
Conjoint degrees

A specialised programme of study that enables a student to complete two Bachelor's degrees in a shortened time.

Get ready!

Me whakarite koe

Deciding to go to university may seem a little overwhelming for you (and your whānau!) so we have put together a timeline and prepared some information you may find useful to help get your studies off to a great start.



Get planning

Key contacts: University Admissions Office

- Make sure you are on track to get University Entrance (UE). If you are unsure talk to your school.
- Not doing NCEA? See the Admissions section for more information on other pathways into university.
- Check the universities' application deadlines (some programmes have earlier closing dates than others).

MAY

Haratua

Get connected

Key contacts: University Liaison or Recruitment Officers

- Attend a university visit at your school
- Go to a university Open Day—take a university tour, experience a university lecture, talk with students taking courses to hear about their experiences
- Check out a university prospectus
- Universities have lots of supporting guides as well:
 - information for parents
 - accommodation guides
 - Māori student guides
 - Pacific student guides
 - budgeting and financial planning



Get advice

Key contacts: Student Course Advisors & Finance Advisors

Study related:

Course advisers can help you plan your study year!

Contact the university if you'd like help to:

- choose your course
- choose your qualification
- complete your Application to Enrol
- plan your timetable

Money matters:

- Jobs, scholarships, budgeting advice, living expenses – get advice on money matters.
- Think about living expenses.
- See what support your Student Union offers.
- Budget guides are available at each university.

JUN

Pipiri

Get applying

Key contacts: University Admissions Office

- Check (and double-check) the entry requirements for the courses you're applying for. Some courses have specific requirements in addition to UE.
- Go to our 'Get in' section for more details on what you'll need when applying.

JUL

Hōngongoi

Get a scholarship

Key contacts: University Scholarships Office

Universities and other organisations offer a wide-range of scholarships for university study.

There are scholarships to support:

- Academic achievement
- Māori students, Pasifika students, students with Disabilities, Financial hardship
- Sport and Cultural achievement
- Subject-specific scholarships
- School Leaver scholarships

Generosity www.generosity.org.nz/

Māori Education Trust www.maorieducation.org.nz/index.php/scholarships

Universities NZ undergraduate scholarships
<http://www.universitiesnz.ac.nz/scholarships>



Get a room

Key contacts: Accommodation & Halls of Residence

- Take a tour of the facilities.
- Check the application deadlines.
- See the Halls of Residence section.

AUG

Hereturikōkā



Get funded

Key contacts:
StudyLink & Fees-free websites

Apply by 16th December

to help get your correct payments on time, even if you haven't finalised where or what you're studying.

See the StudyLink section.

Fees free?

Check the government's fees-free website to see if you're eligible.

NOV

Whiringa-ā-rangi

Get accepted

Key contacts:
University Student Admissions Office

- **Conditional offer of place**
Universities may make you a conditional offer before your school results are released.
- **Formal offer of place**
Universities will send a formal offer once school results are released.
- **Accepting or declining an offer of place**
The university will send you information about accepting or declining an offer of place.

DEC

Hakihea

Get under way

Key contacts:
University Student Associations

- **Orientation Week (O Week)** is where you'll meet new people and be introduced to the campus, its support teams and services. There are lots of fun events like concerts, and club events.
- **'Clubs Day'** is where you will find out about the clubs on campus. Sign up to a wide range of sport teams, academic, cultural or social groups.
- **Māori and Pasifika** students may be invited to attend a Pōwhiri, or another formal welcoming. Your whānau can come too!

JAN

Kohitātea

Get it sorted

Key contacts:
Admissions

Changing your enrolment

- You can drop, swap or add a course for a limited time at the start of each semester.
- Check the change of enrolment deadlines or you will be charged for the courses you want to drop.

FEB

Huitānguru

Many scholarships for school leavers are based on Year 12 results.

Did you know
NZQA has an NCEA Tracking App?

www.nceatrack.nz

Get a Job

Key contacts:
Student Job Search & NZUniCareer Hub

- If you are going to need a job to help with costs at university check out Student Job Search
- Check out 'Career Hub' – an online tool to find work

Career Hub:
nzunicareerhub.ac.nz/
Student Job Search:
www.sjs.co.nz



Get in: Admission to university

Te whakauru mai

How do I get into university? There are a range of different pathways into university.

Lockdowns due to COVID-19 may also have driven changes to university requirements. For the latest information, check our website:

www.thinkingaboutuni.nz

If you need further support, contact a university.

University Entrance through NCEA

University Entrance (UE) is the minimum standard for entrance to a New Zealand university.

To qualify you will need:

NCEA Level 3

Three subjects – at Level 3, made up of:

- 14 credits each, in three approved subjects

Literacy - 10 credits at Level 2 or above, made up of:

- 5 credits in reading
- 5 credits in writing

Numeracy - 10 credits at Level 1 or above, made up of:

- achievement standards—specified achievement standards available through a range of subjects, or
- unit standards—package of three numeracy unit standards (26623, 26626, 2662—all three required).

Check out the 'Other Admission Pathways' if you've missed out on University Entrance.

For more information on University Entrance, go to NZQA's website www.nzqa.govt.nz/ncea

Te Marautanga o Aotearoa

The University Entrance standard includes approved subjects and achievement standards from the Te Marautanga o Aotearoa. Visit NZQA for more information.

An NCEA Level 3 certificate

14 credits
at level 3 in
an approved
subject

14 credits
at level 3 in
an approved
subject

14 credits
at level 3 in
an approved
subject

Literacy:

10* credits at level 2 or
above (5 in reading,
5 in writing)

Numeracy:

10* credits at level 1
or above

*From specified list of standards. See www.nzqa.govt.nz



Other school-leaver qualifications

Universities also accept other school-leaver qualifications for admission to an undergraduate degree:

Cambridge Assessment International Examinations (CAIE)

To be eligible for admission, candidates must achieve the following:

Part A

- a minimum of 120 points on the New Zealand CAIE Tariff (refer table) at A or AS level from any syllabus

groups which are broadly equivalent to those in the list of approved subjects for NCEA, and

- a D grade or better in syllabuses from at least three different syllabus groups (excluding Thinking Skills).

Part B

Literacy and numeracy must be satisfied as follows:

Literacy

EITHER

An E grade or better in any one of AS English Language, Language and Literature in English, Literature in English. A D grade or better will satisfy one of the syllabus requirements of Part A

OR

As prescribed for university entrance with NCEA

Numeracy

EITHER

- (i) A D grade or better in IGCSE or GCSE mathematics, or
- (ii) Any mathematics passed at AS level. A 'D' grade or better will satisfy one of the syllabus requirements of Part A

OR

As prescribed for university entrance with NCEA

NZ CAIE Tariff		
Grade	A level	AS level
A*	140	n/a
A	120	60
B	100	50
C	80	40
D	60	30
E	40	20

International Baccalaureate (IB)

Completion of the Diploma (minimum of 24 points).

An IB Diploma completed with English as Language A1 at either Higher or Standard Level and including any mathematics subject satisfies the literacy and numeracy requirements for University Entrance.

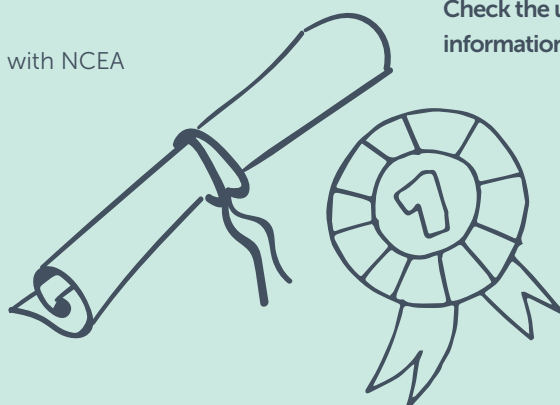
New Zealand Certificate in Steiner Education (Level 3)

A completed Steiner School Certificate Level 3, including 9 points in each of 3 approved subject areas, 7 points in literacy (4 writing/3 reading), and 9 points in numeracy.

Overseas school-leaver qualifications

Universities accept a wide-range of overseas school-leaver qualifications for admission.

Check the university websites for up-to-date information.





Additional entry requirements

- Some courses of study require you to have taken specific NCEA-approved subjects and gained a minimum number of credits.
- Some courses of study require you to have taken specific achievement standards in certain NCEA-approved subjects.
- Some courses of study also have other entry requirements such as a portfolio, audition and/or interview.

Selective entry

- Selective entry might apply to some courses of study, especially for those with limited or competitive entry.

Guaranteed or preferential entry scores

- Some universities use a rank score system for guaranteed or preferential entry into some courses of study, especially for those with limited or competitive entry. The score is based on the number of Level 3 credits you gain with Excellence, Merit or Achieved.
- You may still be accepted into a course of study if you don't meet the rank score but meet the University Entrance standard. Check with the university for the specific details.
- Get the right advice: Check with the university to see if the rank score applies to you and how to calculate your score for that university.

Targeted entry pathways

Some universities have special entry pathways for specific student groups e.g. Māori, Pacific and students with disabilities.

OTHER ADMISSION PATHWAYS

University preparation courses

Universities and other providers offer University Preparation courses for students without University Entrance or an equivalent qualification.

Check with the university to see which courses they accept as a suitable entry qualification.

If you didn't get University Entrance this may be an option for you! Contact the university to find out more.

University Academic Calendars

A university's Academic Calendar contains a record of all the university's regulations, policies and course information for the academic year.

Even if you've started your study, you can move to another institution!

Discretionary Entrance

If you are a New Zealand or Australian citizen (or permanent resident) who hasn't continued secondary education beyond Year 12 you can apply for Discretionary Entrance based on your Year 12 results.

You'll need to have met certain requirements in your Year 12 results, including a reference from your school principal (or another suitable person) and you may need to do an interview. Discretionary Entrance is only for admission into a specific course of study, not general admission into a university.

Check the university websites for more information.

Special Admission for students over 20 (without UE)

If you are over 20 years old and a New Zealand or Australian citizen (or permanent resident) and don't have a University Entrance qualification, you can apply for Special Admission.

Check the university websites for Special Admission application deadlines and what you'll need to provide with your application.

Transferring students

If you're transferring from one degree to another you can apply to have the courses you've already completed credited to your new degree.

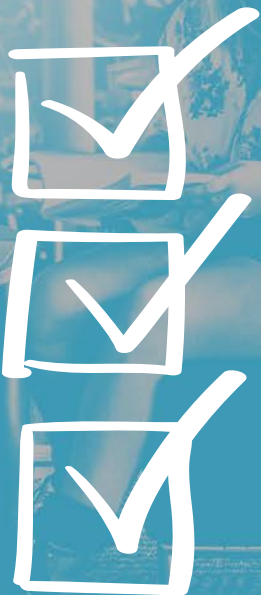
Get sorted – StudyLink, scholarships, accommodation

Me whakarite koe

• Hoto Akoranga

• Karahipi

• Wharepuni



You'll see in the timeline some key things to think about. This section looks at a few of these areas in more detail.

Parents:

StudyLink can only give you information about *your* part of your child's application (e.g. your income evidence) unless they have appointed you as their agent.

StudyLink

Hoto Akoranga

It's important that you work out how you are going to fund your study and living costs. Here's an idea about what you'll need to apply to StudyLink.

For all the details on the financial support available from StudyLink, go to studylink.govt.nz/starting-study

Student Loans – Help you to pay for your course fees (the compulsory fees charged by your education provider), study materials (e.g. books, computer) and living costs.

Just remember it's a loan. You'll have to pay this back.

Student allowance – This is a weekly payment that can help with your living expenses while you are studying if you are eligible. You don't have to pay the money back BUT there are conditions.

You can apply for student loans and allowances online. Make sure you have:

- RealME account to apply online and access your My StudyLink
- RealME verified identity

The documents you'll need to provide for a RealME account include evidence of:

- who you are (birth certificate or passport)
- name change (if you've changed your name)
- your bank account number (verified)
- your IRD number.

If you're under 18 you'll need to supply some additional information.

The StudyLink eligibility test is part of the application process. This tells you what you may be eligible for. You'll need to provide the following information:

- Course details (including start and end dates and study break period)
- Citizenship/residency details
- Income information, if applicable
- Parents' income information (if you're under 24). If you have a child or you're over 24 and you have a partner you'll need to provide additional information. See the StudyLink website for more information
- IRD number and tax code

Parents: StudyLink can only give you information about *your* part of your child's application (e.g. your income evidence) unless they have appointed you as their agent.

www.studylink.govt.nz/starting-study/thinking-about-study/information-for-parents.html

www.studylink.govt.nz
0800 88 99 00

www.realme.govt.nz
0800 664 774

www.ird.govt.nz
0800 775 247



Lots of scholarships are available.
Really encourage your rangatahi to apply.



Scholarships

Karahipi

Scholarships are a smart way to fund your study. Depending on the scholarship, you might need to provide the following supporting documents with your application:

- Personal statement: academic achievements, leadership, sporting, cultural and community achievements and involvement
- Statement about your study plans and ambitions
- List of accomplishments, awards, leadership positions
- Academic results (e.g. NCEA record of achievement)
- References – different scholarships might require different types of references:

- **Academic reference:** supports your academic achievements and ambitions
- **Character reference:**
 - supports your personal qualities and non-academic achievements (e.g. leadership, sporting and cultural activities)
 - identify strong referees for each type of reference
 - confirm that they are willing to be contacted for a written reference (these are usually confidential and submitted directly to the scholarship administrators)
 - provide your referee with information about the scholarships you are applying for and the closing dates.

Remember you can apply for as many scholarships as you like, and at multiple universities!

If you are of Māori descent, make sure you check to see if your iwi offers education scholarships.

There are lots of scholarships available. Really encourage your rangatahi to apply.

Halls of Residence

Wharepuni

Halls of Residence (also known as residential colleges) are typically for full-time first-year students. They provide a welcoming community to help you settle into university life.

You will pay rent for your room, and in most cases this will cover, food, power and internet costs. Halls are a great place to get academic support and get involved in social events.

Applications often open around August-September so you'll need to ensure you have all the documentation ready to submit an application. Places are limited.

In most cases, you'll also need to pay a 'bond' or 'deposit' if you accept an offer.

A deposit will often cover things like the bond, administration fees and activities fees. A bond is an advance payment that the Halls of Residence ask students to pay as security to cover any unpaid rent, or damage to the property.

Halls of Residence applications are interested in an applicant's academic achievements and personal qualities and attributes.

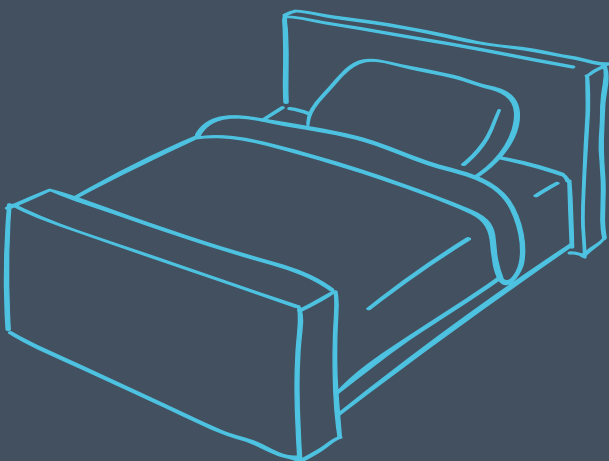
You may need to provide statements and information about the following as part of your Halls of Residence application:

- personal statement: academic achievements, leadership, sporting, cultural and community achievements and involvement
- statement about your study plans and ambitions
- list of accomplishments, awards, leadership positions
- academic results (e.g. NCEA record of achievement)
- a reference from your secondary school
- photo—head shot

Scholarships are sometimes available to help with Halls of Residence costs. Check out the universities' scholarship pages!

Accommodation

You may choose to flat rather than move into a Hall. The universities have Accommodation Offices that can help find a suitable property to rent. They can also provide information on costs, lease agreements and finding flatmates.



Halls of Residence are interested in an applicant's academic achievements, personal qualities and attributes.

A deposit will often cover things like the bond, administration fees and activities fees. A bond is an advance payment that Halls of Residence ask students to pay as security to cover any unpaid rent, or damage to the property.

Get more experience!

Me whakawhānui te wheako

Universities offer a range of opportunities for you to experience, connect and explore life as a student. When you're thinking about which university to attend, also look at the additional experiences on offer.



Study abroad and student exchange

Akoranga kei
tāwāhi

Experience and explore

Study abroad and student exchange programmes are an opportunity to explore and experience overseas study as part of your NZ degree.

- Earn credits towards your NZ degree
- Graduate with international experience
- Pay NZ tuition fees and, if you're eligible, continue to receive StudyLink loans or allowances (see StudyLink for more information).

Summer research scholarships

Karahipi
Rangahau o te
Raumati

Explore the world of academic research

- Gain valuable research experience
- Develop your research skills
- Work with leading researchers
- Enhance your career opportunities
- Prepare for the possibility of postgraduate study

Internships and work placements

Tūranga tauira

Connect

Internships and work placements are an opportunity to connect with industry, all as part of your study experience.

- Apply your learning to 'real-world' situations
- Develop valuable transferable skills
- Build your work history

Further information

To find out more about these opportunities use these 'keywords' to search the university website for more details.

Study abroad

Internships

Summer research

Work placements

Exchange

Summer scholarships

Student life: a typical day

Te noho hei ākonga

To give you an idea of student life, we've put together what a typical day could look like!

LET'S SAY YOU'RE A
FIRST-YEAR BACHELOR OF EDUCATION (TEACHING)
STUDENT LIVING IN A HALLS OF RESIDENCE
CLOSE TO CAMPUS!

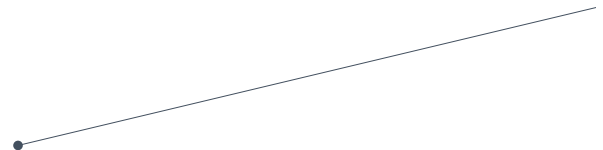
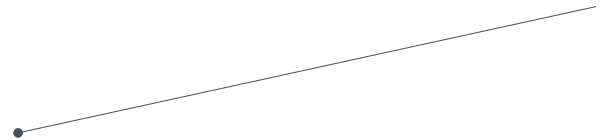
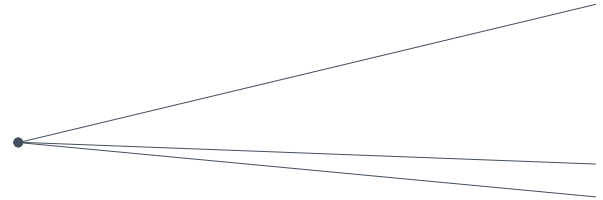
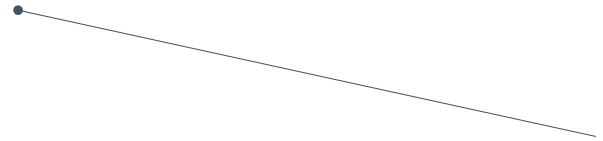
SEMESTER ONE SCHEDULE

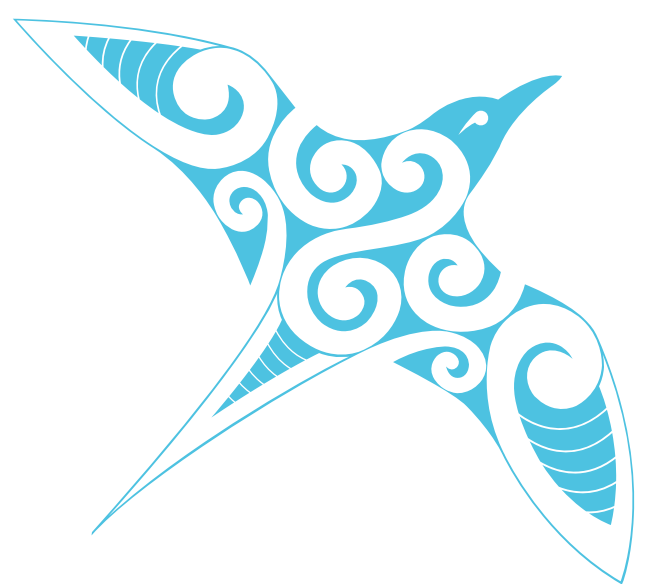
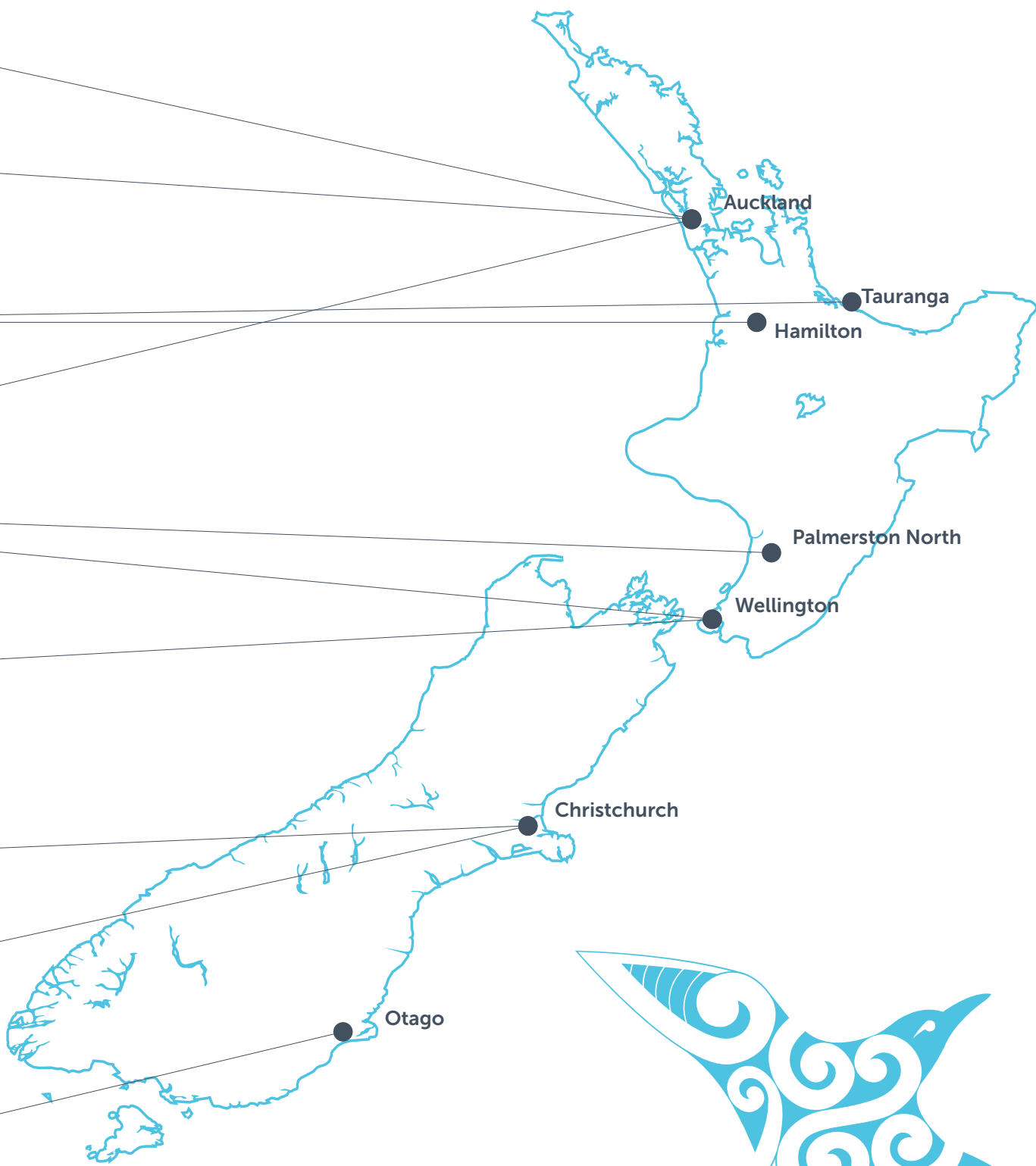
Date

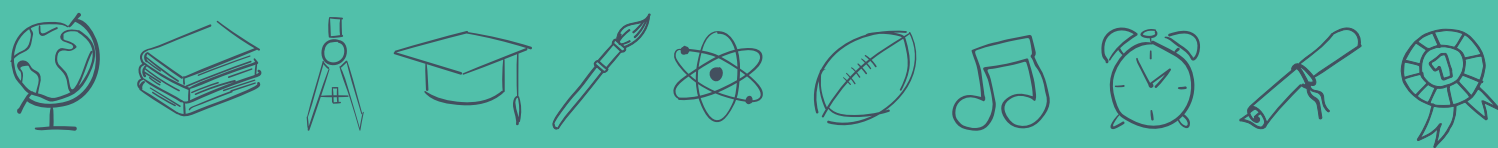


- 8AM:** WAKE UP, GET READY, AND GO TO BREAKFAST IN THE DINING HALL
- 8.45AM:** WALK TO CAMPUS, CATCH UP WITH FRIENDS
- 9AM:** LECTURE 1
- 10AM:** HEAD OFF TO YOUR TUTORIAL CLASS STARTING AT 10AM
- 11AM:** TUTORIAL DONE, TIME TO HEAD OFF TO THE GYM
- 12 NOON:** GO BACK TO THE HALL, SHOWER AND GRAB SOME LUNCH
- 12.45PM:** LECTURE 2 - GUEST LECTURE
- 2.45PM:** GRAB A COFFEE AND GET OVER TO THE STUDENT HUB TO WORK ON YOUR ASSIGNMENT
- 4.30PM:** RETURN TO HALL, MEET UP WITH FRIENDS AND CHILL BEFORE DINNER
- 6PM:** DINNER IN THE DINING HALL
- 7PM:** HEAD TO THE REC ROOM FOR THE HALLS 'MOVIE NIGHT'

*To do: register on Student Job Search website and find a job (www.sjs.co.nz)







Te Pōkai Tara
Universities
New Zealand

Universities NZ – Te Pōkai Tara
Level 9, 142 Lambton Quay, Wellington
PO Box 11915, Wellington 6142, New Zealand
Telephone: +64 (04) 381 8500

thinkingaboutuni.nz

universitiesnz.ac.nz